



Certificate of Analysis

47 W Polk St. STE 100-241
Chicago, IL 60605
liftmode@liftmode.com

LiftNode

Piperine

(from *Piper nigrum*)

Material Lot #: 2019041601

Test Date: 04/16/2019

Country of Origin: India

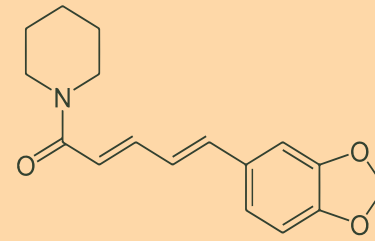
Re-Test Date: 04/15/2022

Analysis	Claim	Result
Piperine	≥95%	99.4%

Test	Specification	Result
Identification (1H-NMR)	Conforms to Structure	Conforms
Piperine (HPLC)	≥95%	99.4%
Lead	≤0.5ppm	0.009 ppm
Mercury	≤0.5ppm	0.004 ppm
Cadmium	≤0.5ppm	0.009 ppm
Arsenic	≤0.5 ppm	<0.001 ppm
Total Aerobic Plate Count	<1000 cfu/g	<1000 cfu/g
Yeast & Mold	<100 cfu/g	<100 cfu/g
Escherichia coli	Absent	Absent
Coliforms	<10 cfu/g	<10 cfu/g
Salmonella	Absent	Absent

Piperine should be stored at or below room temperature in a tightly sealed durable container. Piperine should be protected from excess heat, direct sunlight, excess humidity, and moisture. Piperine has a retesting period of 3 years from the date of analysis when properly stored.

Piperine



Main Benefits

- When taken as a dietary supplement, Piperine has the ability to significantly improve the absorption and uptake of many dietary supplements.
- Piperine may also have powerful anti-oxidant effects and support a healthy circulatory system.
- Piperine may also slow intestinal removal of supplements. These effects allow your body to better absorb supplements that are metabolized by the liver.

Main Cautions

- Piperine is the extracted active compound from black pepper which is generally regarded as safe for consumption around the world.
- There may be significant interactions between Piperine and medication. If you are taking any medication, it is very important that you consult with your doctor before using this supplement.
- Do not exceed the suggested serving size for Piperine supplements.

Usage Tips

- A disposable double sided measuring scoop is included. Two level scoops from the small end contains approximately one serving, or approximately **8-10mg of Piperine**. As a dietary supplement, take 1-4 servings up to three times per day (optimally, 1 hour prior to taking other supplements). Start at the lower suggested quantity to assess response.
- The negative effects of Piperine are dependent on the amount taken, so use of a scale with 10mg/0.01g accuracy or better is highly recommended.
- Use of capsules, or mixing with tea, yogurt, apple sauce, or oatmeal may help make the powder more tolerable.
- This supplement is not intended to treat, diagnose, prevent, or cure any diseases. Consult your healthcare provider before use if you have a medical condition or if you are taking any prescription medications.
- It is safe to stack Piperine with other supplements, so long as the amount consumed does not exceed the suggested serving size.
- The benefits of Piperine are most effective when they are supported by a healthy diet and plenty of exercise.



812 Meadowlark Lane, Goodlettsville, TN 37072
 Telephone: 615-239-8604

Certificate of Analysis

Synaptent LLC
 47 W Polk Street, 100-241
 Chicago, IL 60654

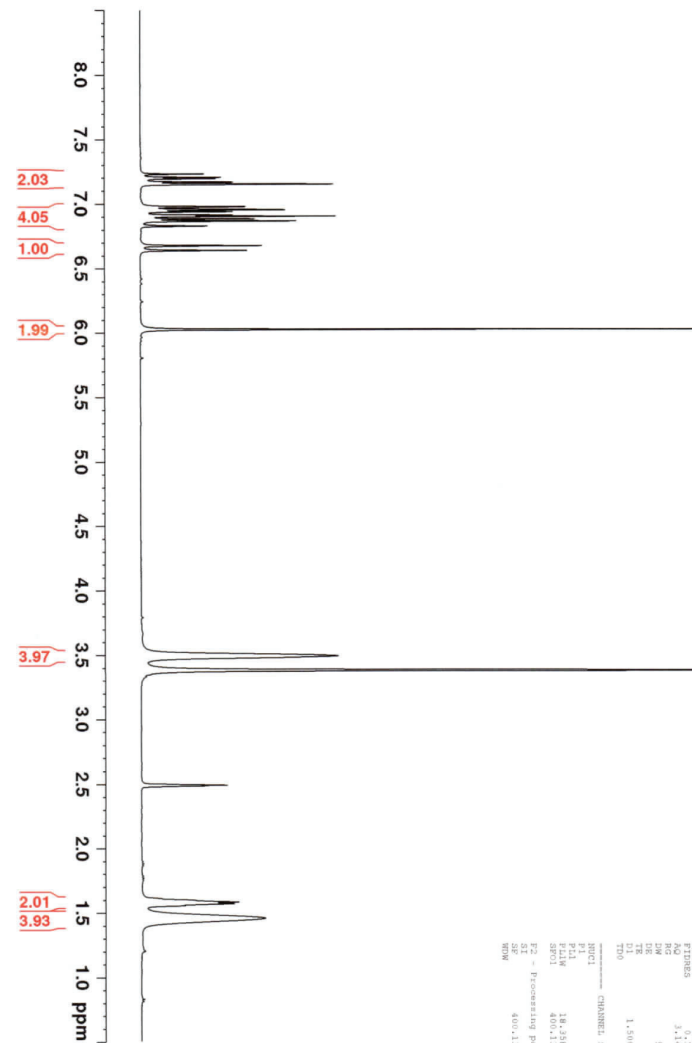
Product Name	Piperine	Product Lot Number	2019041601
Report Date	04/18/2019	Laboratory Number	11764

Description	Method	Result
Identification	¹ H NMR	Conforms
Assay	HPLC	99.4 %
Lead	ICP-MS	0.009 ppm
Arsenic	ICP-MS	<0.001 ppm
Cadmium	ICP-MS	0.009 ppm
Mercury	ICP-MS	0.004 ppm
Total Aerobic Count	Biolumix	<1,000 CFU/g
Yeast and Mold	Biolumix	<100 CFU/g
E. Coli	Biolumix	Absent
Coliform	Biolumix	<10 CFU/g
Salmonella	Biolumix	Absent

Michael Robil
Michael Robil
 QA Auditor

04/18/19
 04/18/2019
 Date

The result(s) stated in this report is only for the sample submitted. This report may not be reproduced in whole or in part, nor may any reference be made to the work, the result, or the company in any news release, public announcements or advertising without our prior written consent.



Current Data Parameters
 EXNO: 1
 PROCNO: 1
 F2 - Acquisition Parameters
 Date_ 20190418
 Time_ 11:11
 INSTRUM spect
 PROBHD 5 mm BBO
 PULPROG zgpg30
 AQC 120
 SOLVENT DMSO
 NS 32
 DS 2
 SWH 5298.433 Hz
 FIDRES 0.1457288 Hz
 AQ 0.118 sec
 DE 224.41 umol
 TE 300.2 K
 D1 1.5000000 sec
 T1 1.700 sec
 CHANNEL f1
 NU1 11.26 umol
 PL1 18.2450 dB
 SFO1 400.1326007 MHz
 F2 - Processing parameters
 SI 400.1326007 MHz
 SF 400.1326007 MHz
 DM 32

¹H NMR of Piperine
 in DMSO
 Lot # 11746
 Colmaric Analytical
 400 MHz